

OVERVIEW

This annual course is held locally to teach primary care and specialty providers about the latest advances in weight loss surgery, how to identify patients suitable for surgery, how to assist patients in the weight loss surgery evaluation process, and how to manage patients who have undergone weight loss surgery. The course focuses on the long-term post-surgical medical management of the patient for successful weight loss, the management of co-morbidities, and identifying potential risks.

AUDIENCE

This course is intended to meet the needs of primary care providers and other specialists who manage patients with morbid obesity. This course is also beneficial to residents and fellows in surgical or medical training as well as physician assistants and nurse practitioners.

COURSE OBJECTIVES

- ◆ Identify the disease of morbid obesity and its co-morbid conditions
- ◆ Increase knowledge of weight loss surgery procedures and procedure outcomes
- ◆ Explain common operative and post-operative complications
- ◆ Review and discuss how to manage changes after weight loss surgery; diabetes, cardiovascular disease, bone metabolism, pregnancy, depression, and endocrine diseases
- ◆ Help patients achieve and maintain successful weight loss

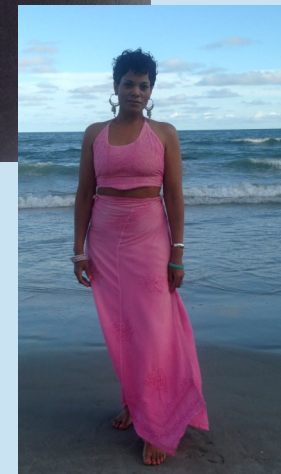
 **Duke Weight Loss Surgery**

407 Crutchfield Street
Durham, NC 27704
weightloss.surgery.duke.edu

Non-Profit Org.
US Postage
PAID
Durham, NC
Permit No. 60



Selection and Medical Management of Weight Loss Surgery Patients



*A Comprehensive Guide to Weight Loss Surgery
for Primary Care and Specialty Physicians*

*The Umstead Hotel
Cary, North Carolina*

April 9, 2016

Presented by Duke Weight Loss Surgery

Selection and Medical Management of Weight Loss Surgery Patients

*A Comprehensive Guide to Weight Loss Surgery for
Primary Care and Specialty Physicians*

The Umstead Hotel
Cary, North Carolina
April 9, 2016

ACCREDITATION



In support of improving patient care, the Duke University Health System Department of Clinical Education & Professional Development is accredited by the American Nurses Credentialing Center (ANCC), the Accreditation Council for Pharmacy Education (ACPE), and the Accreditation Council for Continuing Medical Education (ACCME), to provide continuing education for the health care team.

Category 1: Duke University Health System Department of Clinical Education and Professional Development designates this live activity for a maximum of 6.5 *AMA PRA Category 1 Credit(s)*™. Physicians should claim only credit commensurate with the extent of their participation in the activity.

Nursing CE: Duke University Health System Department of Clinical Education and Professional Development designates this activity for up to 6.5 credit hours for nurses. Nurses should claim only credit commensurate with the extent of their participation in this activity.



DISCLAIMER The information provided at this CE activity is for continuing education purposes only and is not meant to substitute for the independent medical judgment of a healthcare provider relative to diagnostic and treatment options of a specific patient's medical condition.

COMMERICAL SUPPORT This CE activity is supported by educational grants. A complete list of supporters will be published in the course syllabus.

AGENDA

| | |
|----------|---|
| 7:30 AM | REGISTRATION, CONTINENTAL BREAKFAST, EXHIBITS |
| 8:15 AM | WELCOME AND OVERVIEW Dana Portenier, MD |
| 8:30 AM | <i>Bariatric Surgery: Who Qualifies? Who Should I Refer?</i> Chan Park, MD |
| 9:00 AM | <i>Restrictive Procedures: "Band and Sleeve"</i> Jin Yoo, MD |
| 9:30 AM | <i>Combination Procedures: "Roux-en-Y and Duodenal Switch"</i> Ranjan Sudan, MD |
| 10:00 AM | BREAK AND EXHIBITS |
| 10:10 AM | <i>Weight Loss Expectations and Merits</i> Keri Seymour, DO |
| 10:40 AM | <i>Management of Overweight/Obesity for the Internist</i> William Yancy, MD |
| 11:10 AM | <i>Latest Advances in Weight Loss Surgery</i> Dana Portenier, MD |
| 11:30 AM | <i>Patient Experiences: How Weight Loss Surgery Changed My Life</i> |

NOON LUNCH AND EXHIBITS

COURSE DIRECTOR

Dana Portenier, MD
Assistant Professor of Surgery
Chief, Division of Metabolic and Weight Loss Surgery
Duke University Medical Center

COURSE FACULTY

Chan Park, MD
Assistant Professor of Surgery
Duke University Medical Center

Keri Seymour, DO
Assistant Professor of Surgery
Duke University Medical Center

Ranjan Sudan, MD
Associate Professor of Surgery
Duke University Medical Center

Jin Yoo, MD
Assistant Professor of Surgery
Duke University Medical Center

Elizabeth Elam, MS, RD, LDN
Clinical Dietician
Duke Metabolic & Weight Loss Surgery Center of Raleigh

Kelli Friedman, PhD
Assistant Professor of Psychiatry & Behavioral Sciences
Duke University Medical Center

Erica Sudyk, MHS, PA-C
Duke Center for Metabolic & Weight Loss Surgery
Duke University Medical Center

Jenny Tong, MD
Department of Medicine
Duke University Medical Center

Maria Tucker, MPH, RD, LDN, CDE
Clinical Dietitian
Duke Center for Metabolic & Weight Loss Surgery

William Yancy, Jr., MD
Associate Professor of Medicine
Duke University Medical Center

| | |
|----------|---|
| 12:30 PM | <i>The Psychological Aspects of Obesity & Bariatric Surgery</i> Kelli Friedman, PhD |
| 1:00 PM | <i>Patient Care: How We Approach Pre-Op Documentation and Post-Op Follow Up</i> Erica Sudyk, PA-C |
| 1:30 PM | <i>Complications After Bariatric Surgery</i> Jin Yoo, MD |
| 2:00 PM | <i>Managing Diabetes and other Endocrine Disorders after Bariatric Surgery</i> Jenny Tong, MD |
| 2:15 PM | <i>Recognizing Post-Bariatric Surgery Complication in the Office</i> Jin Yoo, MD |
| 2:30 PM | <i>Nutritional Deficiency in Weight Loss Surgery</i> Maria Tucker, MPH, RD, LDN, CDE |
| 2:50 PM | <i>Success Habits of Weight Loss Surgery Patients: How Medical Providers can Help their Patients be a Success Story</i> Elizabeth Elam, MS, RD, LDN |
| 3:10 PM | PANEL DISCUSSION All Faculty |
| 3:30 PM | ADJOURN |

Opportunities for Q&A will be provided at the conclusion of each presentation.

REGISTRATION

Registration is \$20.00. Register Online at <https://events.duke.edu/wlscourse>

SPECIAL NEEDS

Duke Weight Loss Surgery is committed to making its activities accessible to all individuals. If you are in need of an accommodation, please do not hesitate to call and/or submit a description of your needs in writing in order to receive service.

CONTACT US/QUESTIONS

For questions, special needs or sponsorship, please contact:
Jennifer Cash • Jennifer.Cash@duke.edu

HOTEL LOCATION

The Umstead Hotel and Spa • 5 SAS Campus Drive
Cary, North Carolina 27513 • 866-877-4141